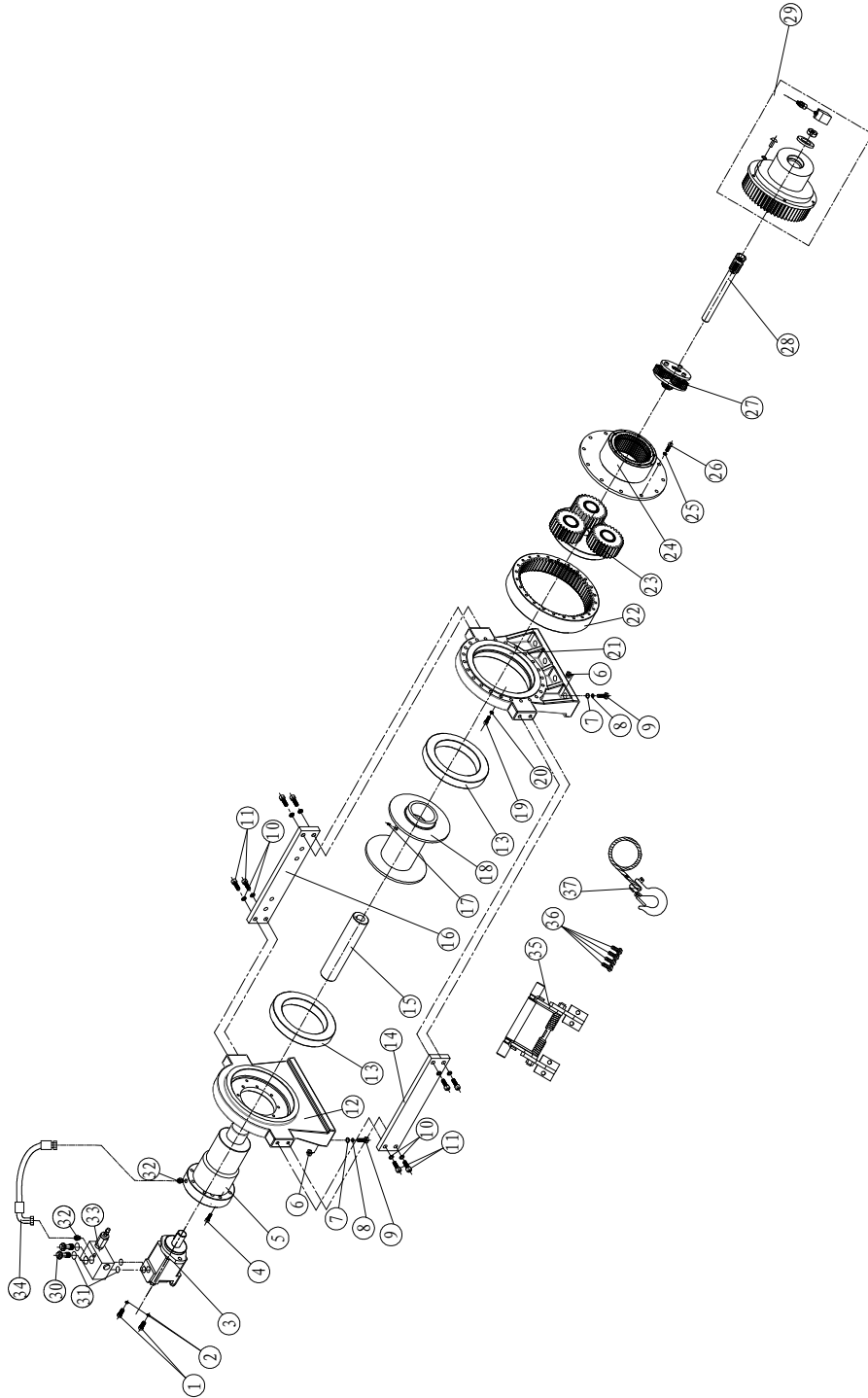




JP10 Winch Assembly Drawing



WINCH PARTS LIST

No.	Part #	Qty	Description	Remark
1	C200NH0001	2	Screw M12 x 35	
2	C200NH0002	2	Lock Washer Φ 12	
3	C200NH010	1	Hydraulic Motor	
4	C200NH0003	8	Screw M8 x 30	
5	C200NH0200	1	Break / Shaft Assembly	
6	C200NH0004	8	Hex Flange Nut M14	
7	C200NH0005	8	Thin Flat Washer Φ 14	
8	C200NH0006	8	Lock Washer Φ 14	
9	C200NH0007	8	Cap Screw M14 x 50	
10	C200NH0008	4	Lock Washer Φ 10	
11	C200NH0009	4	Screw M10 x 30	
12	C200NH0010	1	Front Bearing	
13	C200NH0011	2	Roller Bearing	
14	C200NH0012	1	Frontal Mounting Plate	
15	C200NH0013	1	Coupling	
16	C200NH0014	1	Back Mounting Plate	
17	C200NH0015	1	Screw M8 x 10	
18	C200NH0300	1	Drum Assembly	
19	C200NH0016	24	Screw M8 x 35	
20	C200NH0017	24	Lock Washer Φ 8	
21	C200NH0018	1	End Bearing	
22	C200NH0019	1	Gear-Ring	
23	C200NH0400	1	Gear Carrier Assembly (Output)	
24	C200NH0500	1	Cam Gear (Input)	
25	C200NH0017	12	Lock Washer Φ 8	
26	C200NH0020	12	Screw M8 x 20	
27	C200NH0600	1	Gear Carrier Assembly (Input)	
28	C200NH0021	1	Transmission Shaft	
29	C200NH0700	1	Clutch Assembly	
30	C200NH0022	2	Screw	
31	C200NH023	4	Seal Ring	
32	C200NH0800	2	Tube Fittings Assembly	
33	C200NH0900	1	Balanced Valve Assembly	
34	C200NH1000	1	Plumbing Fixtures	
35	C200NH1100	1	Tensioned Of Steel Wire Supplied Assembly	
36	C200NH0024	4	Screw M10 x 25	
37	C200NH1200	1	Cable Assembly	