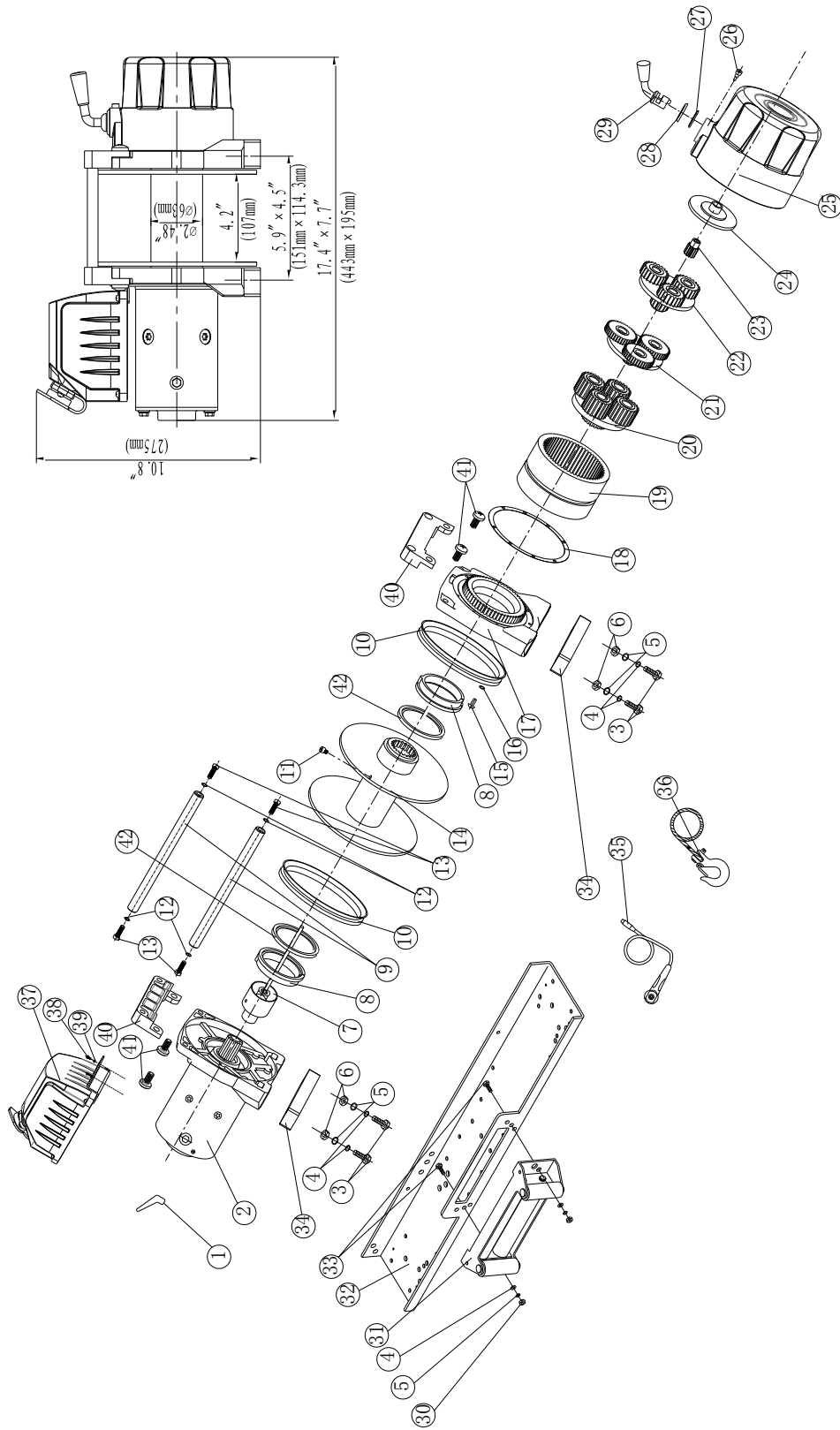




# Spartan 6000 Winch Assembly Drawing



## WINCH PARTS LIST

No.	Part #	Qty	Description	Remark
1	600001	3	Terminal Protect	
2	600100	1	Motor Assembly	
3	600002	4	Cap Screw M10 x 55	
4	600003	6	Lock Washer Φ10	
5	600004	6	Think Flat Washer Φ10	
6	600005	4	Hex Nut M10	
7	600200	1	Break / Shaft Assembly	
8	600006	2	Bushing—Drum	
9	600007	2	Tie Bar	
10	600008	2	Ring Seals	
11	600009	1	Screw M8 x 10	
12	600010	4	Lock Washer Φ8	
13	600011	4	Cap Screw M8 x 30	
14	600300	1	Drum Assembly	
15	600012	8	Screw M5 x 20	
16	600013	8	Lock Washer Φ5	
17	600014	1	End Bearing	
18	600015	1	Gasket	
19	600016	1	Gear—Ring	
20	600400	1	Gear Carrier Assembly (Output)	
21	600500	1	Gear Carrier Assembly(Intermediate)	
22	600600	1	Gear Carrier Assembly (Input)	
23	600017	1	Gear—Input Sun	
24	600018	1	Trust Washer	
25	600019	1	Gear—Housing	
26	600020	1	Clutch Screw	
27	600021	1	Ring Seals	
28	600022	1	Clutch Cover	
29	600023	1	Clutch Handle	
30	600024	2	Locknut M10	
31	600700	1	Roller Fairlead	
32	600025	1	Mounting Channel	By Choice
33	600026	2	Cap Screw M10 x 35	
34	600800	2	block for casting plate bottom side	
35	600900	1	Remote Control Switch (RC3)	
36	600027	1	Cable Assembly	
37	601000	1	Control Box	
38	600028	2	Screw M5×16	
39	600029	2	Lock Washer Ø5	
40	600030	2	block for casting plate up side	
41	600031	4	Screw M10×20	
42	600032	2	drum bushing	