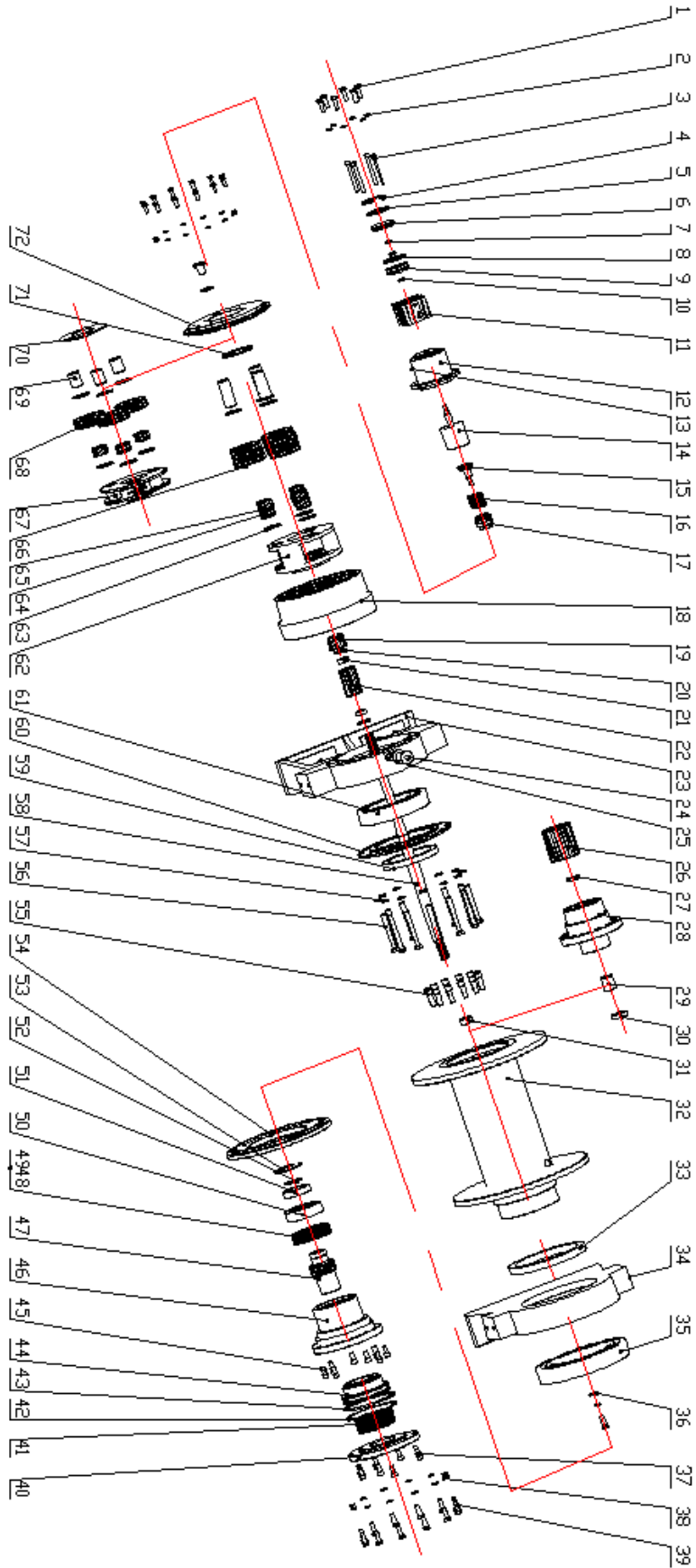




# JP13.5 Winch Assembly Drawing



NO.	Code.	Name.	Count	Remark
1	GB5783-86	Bolt M8*20	6	
2	GB93-87	Gasket 8	6	
3	GB70.1-2000	Screw M12*55	4	
4	GB893.1-86	check ring 65	1	
5	GB3452.1-2005	O-ring 58*2.65	2	
6	IYJ100.1-1	Cylinder cover	1	
7	GB/T6172.1-2000	Nut M10	2	
8	GB3452.1-2005	O-ring 58*2.65	2	
9	IYJ100.1-2	Bib	1	
10	GB3452.1-2005	O-ring 58*2.65	1	
11	IYJ100.1-9B	Cylinder liner	1	
12	IYJ100.1-8	Air vat	1	
13	IYJ100A.4-2	Screw	1	
14	IYJ100A.4-1	Fork	1	
15	IYJ100.1-5	Spring seat	1	
16	IYJ100.1-4	Spring	1	
17	IYJ100A.4-3	linker	1	
18	IYJ100A-2	Gear ring	1	
19	IYJ100A-14	First stage sun gear	1	
20	IYJ100A-12	Cover	2	
21	IYJ100A.1-8	Cover	2	
22	IYJ100A.1-7	Second stage sun gear	1	
23	IYJ100A-10	The left bearing	1	
24	JB1001-77	Ventilate plug screw	2	
25	JB982-77	Gasket 20	2	
26	IYJ100A-11	Driver axle	1	
27	IYJ100A-12	Gasket	1	
28	IYJ100A-11	The middle axle	1	
29	IYJ100A-7	Gasket	1	
30	GB3452.1-85	Oil seal 32x52x8	1	
31	IYJ100A-12	Gasket	1	
32	IYJ100A-4	Drum	1	
33	GB9877.1-86	Oil seal 200*230*15	1	
34	IYJ100A-5	The right bearing	1	
35	GB276-89	Bring 61938	1	
36	IYJ100A-7	Gasket	1	
37	GB70-85	Screw M10*20	8	
38	GB93-87	Gasket 10	13	
39	GB5783-86	Bolt M10*30	13	
40	IYJ100A.3-4	Motor seat	1	
41	Z30A-16	Spring	16	

42	GB3452.1-86	check ring A124*136*2	1	
43	GB3452.1-86	O-ring 120*7	1	
44	IHK3B21E.1-2	Bib	1	
45	GB70-85	Screw M10*30	12	
46	IYJ100A.3-2	Brake cage	1	
47	IYJ100A.3-3	Splined hub	1	
48	HS70K-11	Inner friction disc	6	
49	HS70K-10A	outside friction disc	7	
50	IYJ100A.3-5	Bring seat	1	
51	GB276-89	Bring 61916	1	
52	GB893.1-86	check ring 75	1	
53	JB/ZQ4341-1997	check ring 102*4	1	
54	IYJ100A.3-1	Cover	1	
55	GB70-85	Screw M12*45	20	
56	GB5782-86	Bolt M12*100	12	
57	GB93-87	Gasket 12	12	
58	IYJ100A-6	Driver axle	1	
59	GB9877.1-86	Oil seal 130*160*12	1	
60	IYJ100A-3	Driver axle	1	
61	GB288-87	Bring 3053124	1	
62	IYJ100A.1-2	Second stage planet carrier	1	
63	IYJ100A.1-4	First stage planet gasket	12	
64	GB309-84	Roller 5*21.8	252	
65	IYJ100A-9	Gasket	3	
66	IYJ100A.2-3	Second stage planet gear	3	
67	IYJ100A.1-6	First stage planet carrier	1	
68	IYJ100A.1-3	First stage planet gear	3	
69	IYJ100A.1-2	First stage planet axle	3	
70	IYJ100A.1-1	Gasket	1	
71	IYJ100A-13	Gasket	1	
72	IYJ100A-1	Cover	1	